

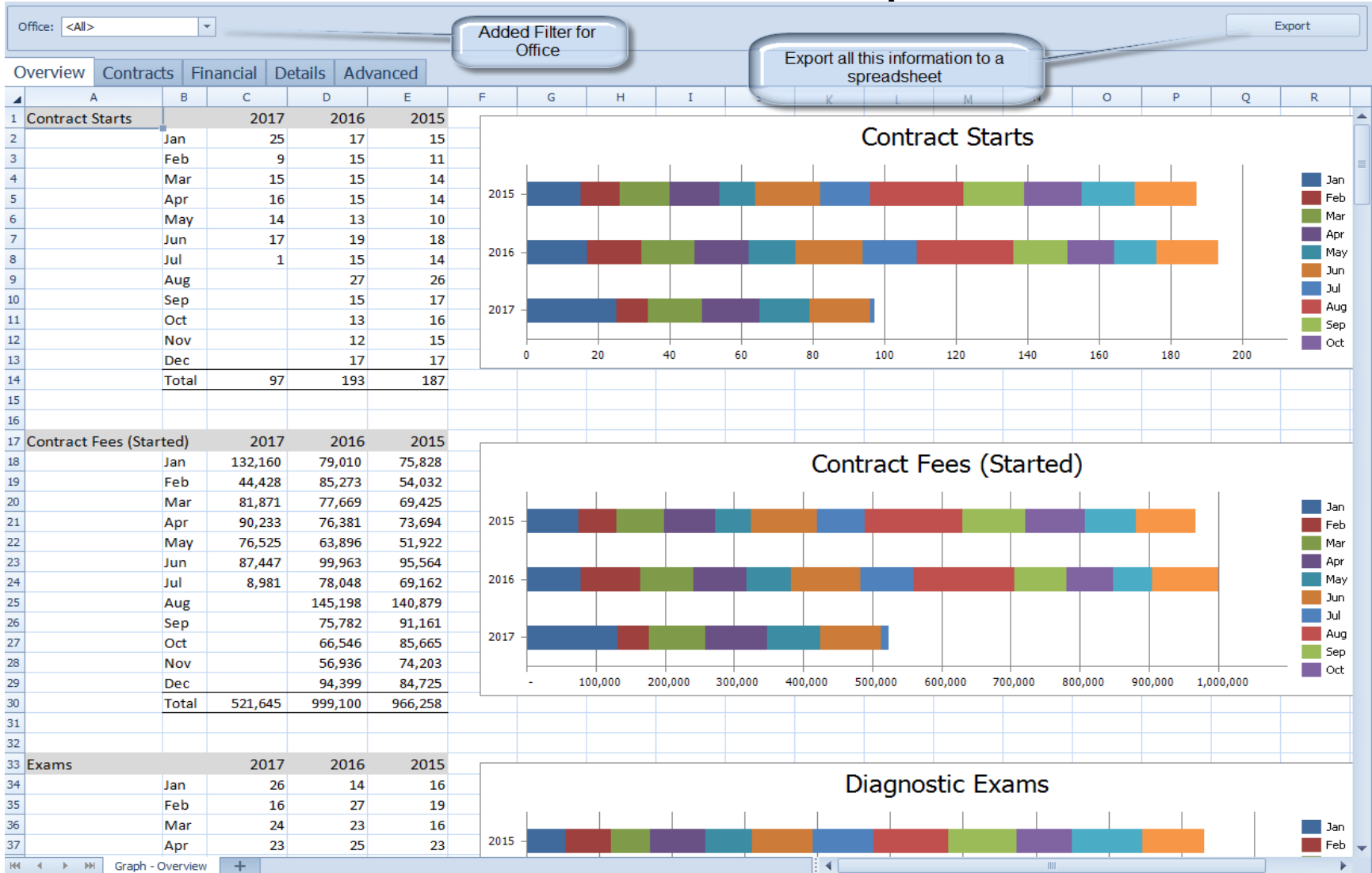
Overview

OrthoProLogic

General features:

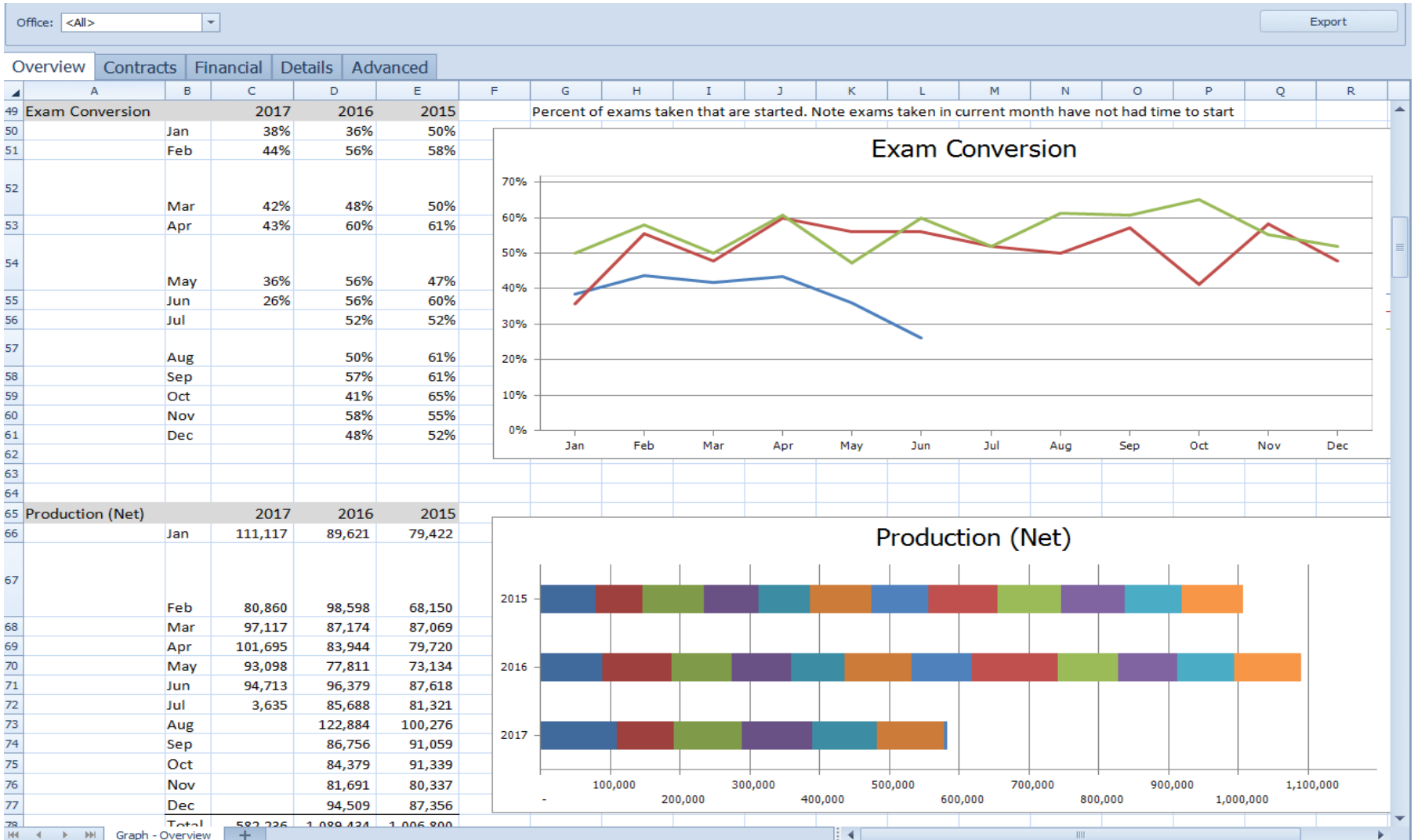
1. Upgrades to Dashboard
2. Added Scanning
3. Added automatic program updates
4. Additional reports
5. Multiple fixes

Dashboard – Overview Tab part 1



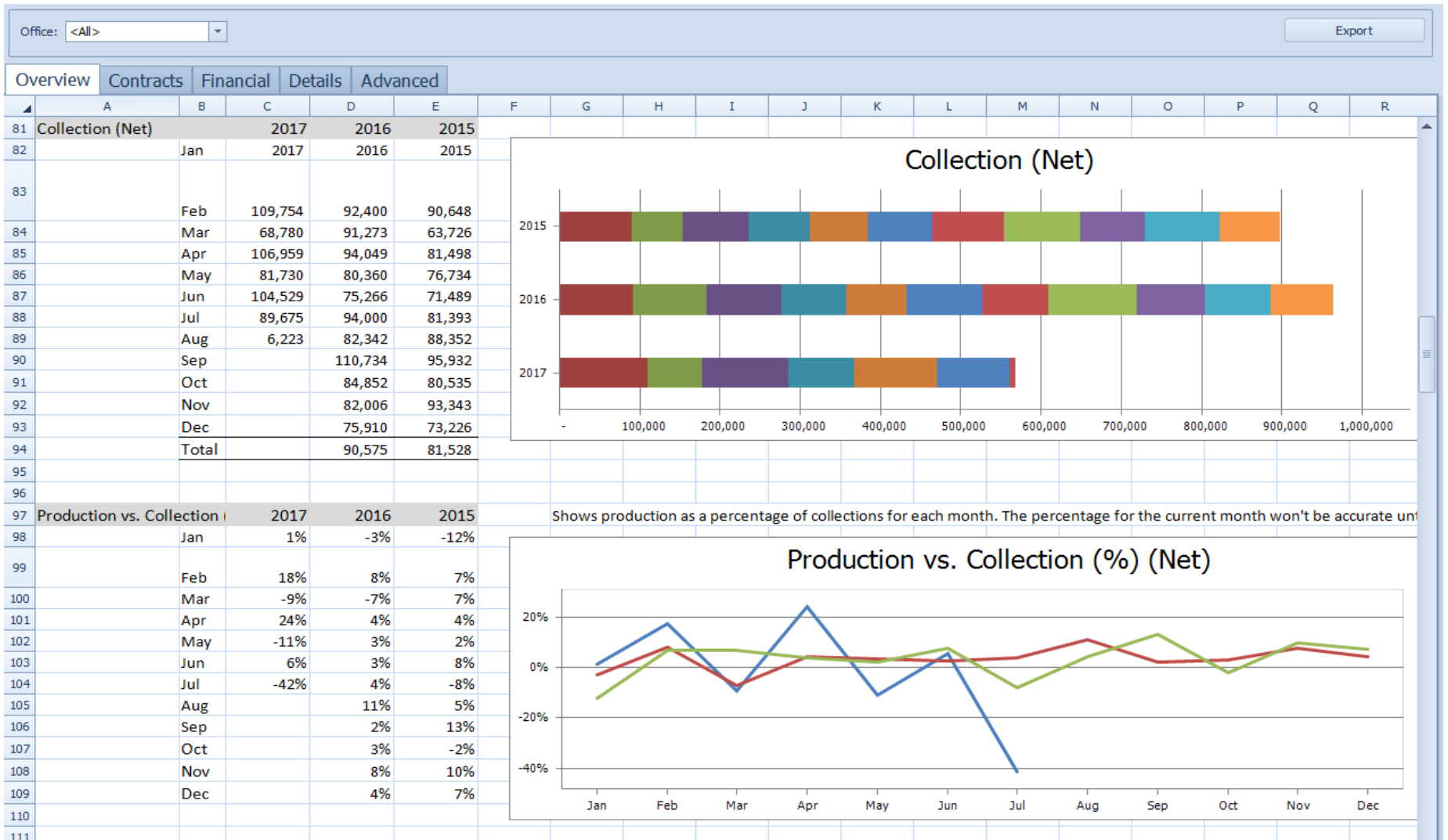
Changed Overview tab to include details and graph of most used statistics

Dashboard – Overview Tab part 2



Changed Overview tab to include details and graph of most used statistics

Dashboard – Overview Tab part 3

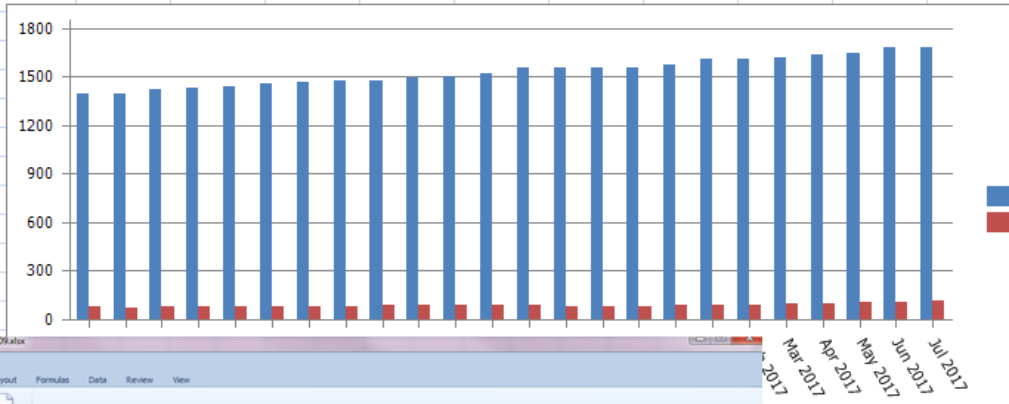


Changed Overview tab to include details and graph of most used statistics

Dashboard – Overview Tab part 4

Extended Treatment (All Contracts)	Month	# Patients Treatment	# Patients Extend Tx	% Extended	Avg Mths In Tx
	Aug 2015	1391	79	6%	13.9
	Sep 2015	1396	75	5%	13.5
	Oct 2015	1418	77	5%	13.5
	Nov 2015	1433	78	5%	13.6
	Dec 2015	1440	77	5%	13.5
	Jan 2016	1455	78	5%	13.5
	Feb 2016	1467	79	5%	13.4
	Mar 2016	1475	78	5%	13.6
	Apr 2016	1480	87	6%	13.7
	May 2016	1490	89	6%	14.0
	Jun 2016	1506	91	6%	13.9
	Jul 2016	1518	88		
	Aug 2016	1556	87		
	Sep 2016	1560	84		
	Oct 2016	1559	83		
	Nov 2016	1557	84		
	Dec 2016	1572	87		
	Jan 2017	1608	85		
	Feb 2017	1614	91		
	Mar 2017	1618	94		
	Apr 2017	1633	100		
	May 2017	1644	103		
	Jun 2017	1678	108		
	Jul 2017	1683	120		

Double click on a month to pop up detailed list of patients



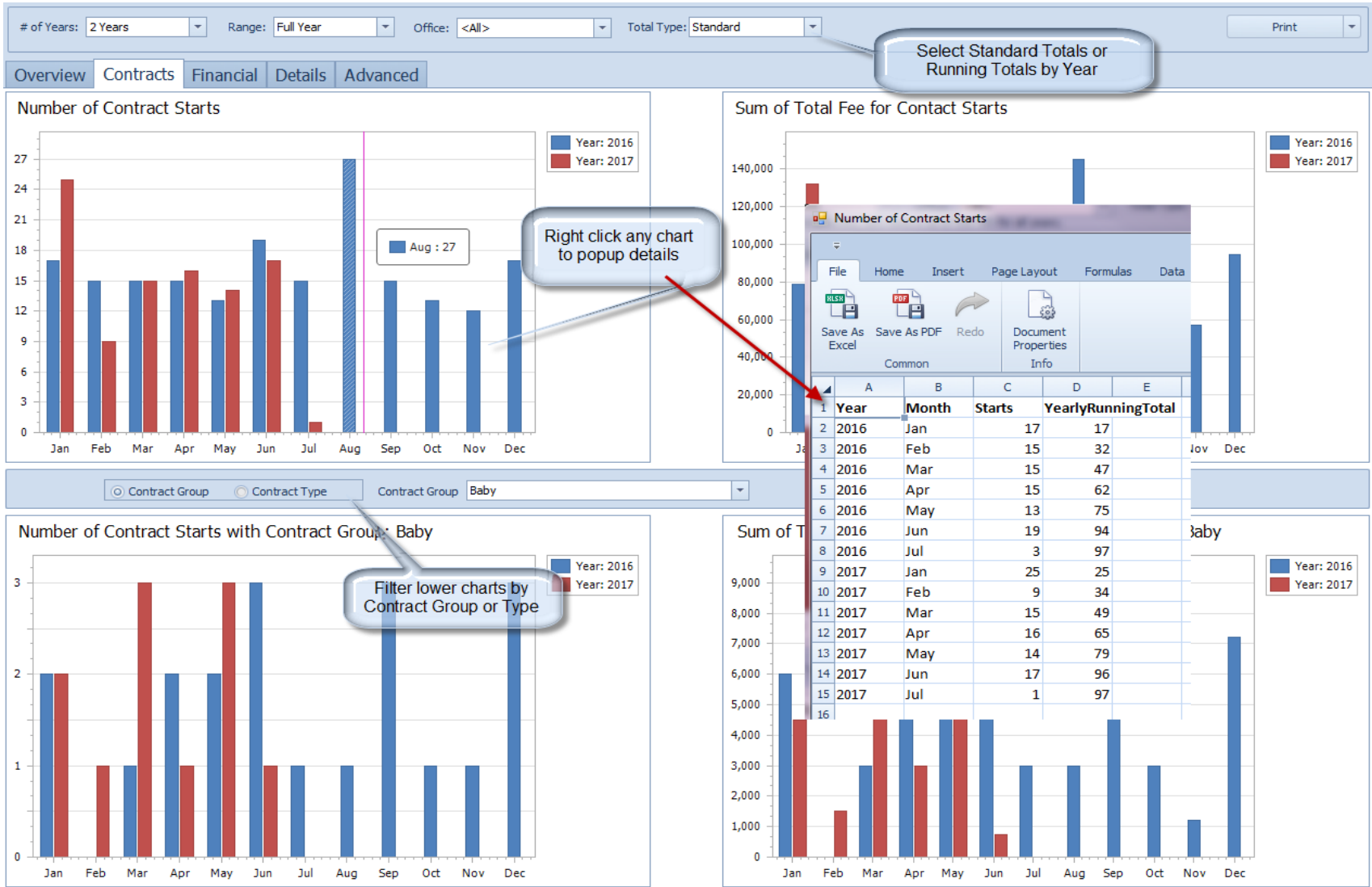
Extended Treatment List 2017-07-09.xlsx

ID	First Name	Last Name	Start Date	Months in Tx	Months Extended	Total Fee	Initial	Monthly Amt	Months Estimated	Variance	Contract Group
2	208410	William	8/19/2010	77.0	61				12	0	0 Invisalign
3	208400	Gabrielle	9/27/2010	75.7	60				0	0	0 Invisalign
4	117174	James	3/15/2011	70.1	54				9	0	0 Phase I
5	217165	Josiah	8/27/2010	76.7	53				8	6	2 Phase I
6	217279	Rachel	8/12/2010	77.2	47				12	12	2 Phase I
7	105581	Divina	3/25/2011	69.7	46				6	6	2 Invisalign
8	117762	Mariana	1/10/2011	72.2	42				12	12	2 Phase I
9	116182	Drew	4/4/2011	69.4	41				10	10	2 Phase I
10	104199	Samuel	8/6/2010	77.4	41				18	18	2 Phase II/Comprehensive
11	118140	Grace	5/13/2011	68.1	40				12	10	2 Phase I
12	214922	Eric	8/10/2010	77.3	39				0	18	4 Surgical
13	117716	Susana	1/5/2011	72.4	39				15	15	2 Invisalign
14	117844	Eric	4/29/2011	68.6	39				12	12	2 Phase I
15	216109	Elianna	8/12/2010	77.2	37				26	22	2 Phase II/Comprehensive
16	118188	Katharine	7/11/2011	66.1	36				12	12	2 Phase I
17	117457	Aidan	3/28/2011	69.6	36				16	16	2 Invisalign
18	215082	Sean	9/27/2011	63.5	36				6	10	2 Limited Comprehensive
19	114137	Karen	10/22/2010	74.9	35				22	22	2 Phase II/Comprehensive
20	112693	Nicholas	8/17/2010	77.1	35				22	24	2 Phase II/Comprehensive
21	117370	Milana	8/6/2010	77.4	35				24	24	2 Phase II/Comprehensive
22	116181	Gilbert	8/4/2010	77.5	35				24	24	2 Phase II/Comprehensive
23	117342	Jennifer	1/8/2011	72.3	34				22	20	2 Phase II/Comprehensive
24	217435	Amanda	9/16/2010	76.1	34				24	24	2 Surgical
25	117676	Stephanie	11/26/2010	73.7	34				22	22	2 Phase II/Comprehensive
26	118767	Andres	12/17/2011	60.8	33				10	10	2 Phase I

Extended Treatment (By Contract Group)	Month	# Patients Treatment	# Patients Extend Tx	% Extended	Avg Mths In Tx
Baby	Aug 2015	21	0		
Baby	Sep 2015	23	0		
Baby	Oct 2015	24	0		
Baby	Nov 2015	24	0	0%	19.7
Baby	Dec 2015	26	0	0%	19.13
Baby	Jan 2016	28	0	0%	18.73

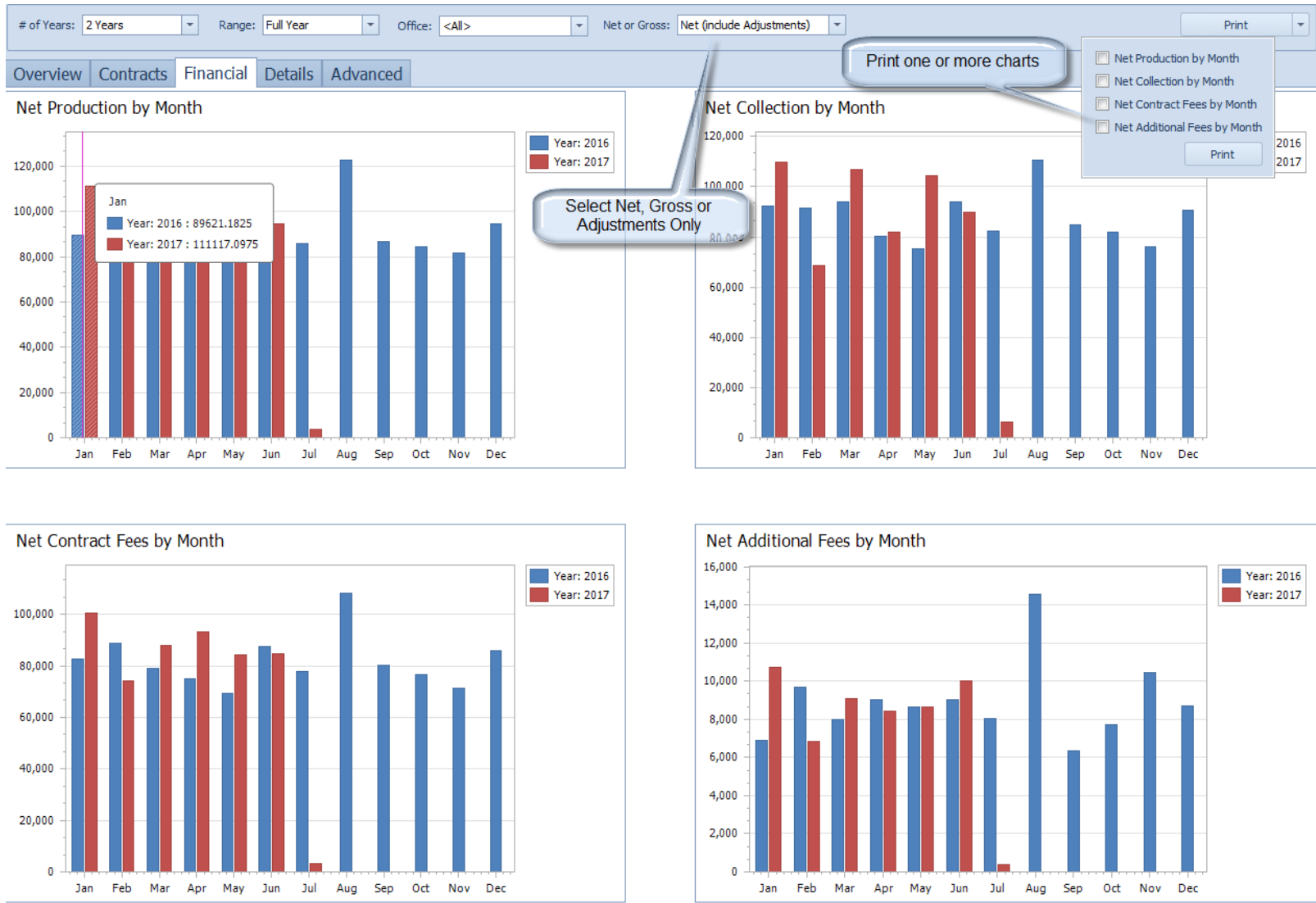
Changed Overview tab to include details and graph of most used statistics

Dashboard – Contracts Tab



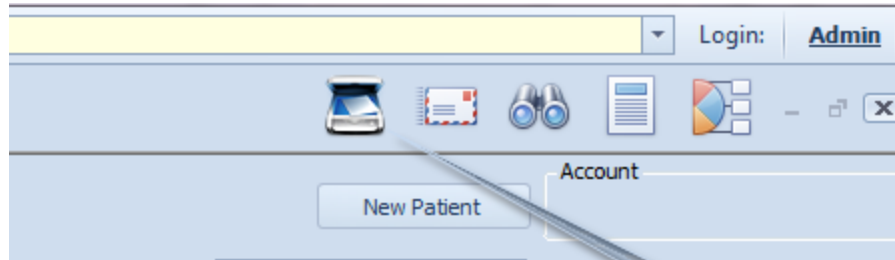
Added Contracts tab

Dashboard – Financial Tab



Added Financial tab

Scanning



Scanning now available in OPL

Scanning icon added to the toolbar

Scanning

The screenshot shows the 'Scan' application window with the following elements:

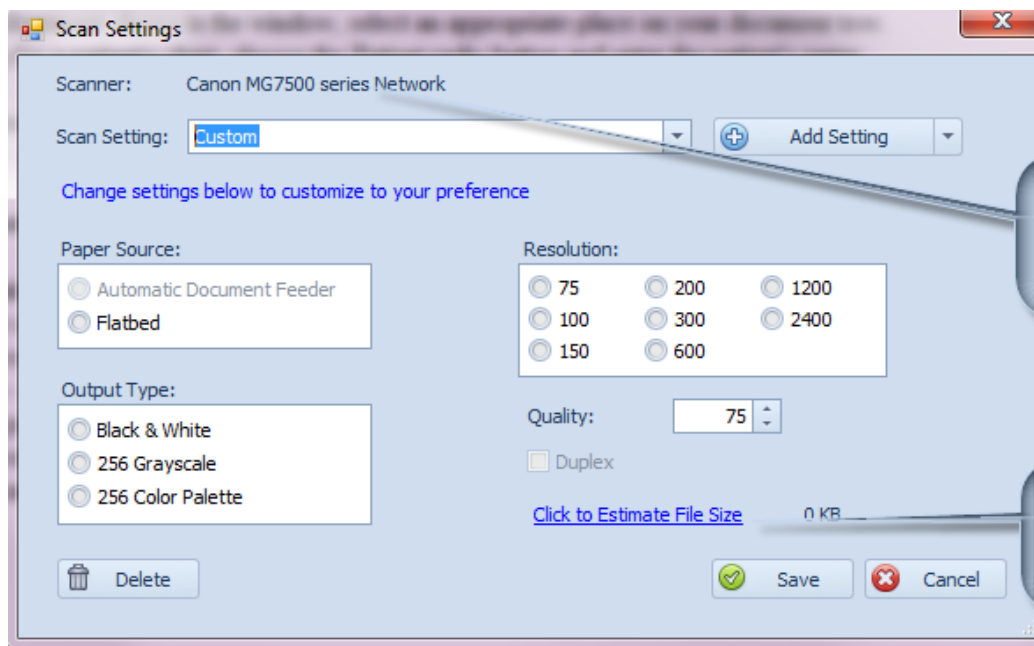
- Header:** 'Scan' window title, 'File Change Scanner' menu, 'Keep on Top' checkbox, and 'Scanner: Canon MG7500 series Network'.
- Main Content:**
 - How to scan a document:**
 - Pick the appropriate scan setting (see Setting up your Scan Settings below for more information).
 - Select Import, Scan Single, or Scan Multiple.
 - After the scanned document shows in the window, select an appropriate place on your document tree.
 - If you are scanning for a patient's chart, choose the Patient radio button and enter the patient's name
 - Date
 - Document tree location - select a location by navigating the document tree on the left
 - Description - provide a description to your scanned document
 - Setting up your Scan Settings:**
 - Use the Setting's link to the left of the Settings dropdown to add or update a scan setting.
 - You will see all the settings available to your scanner
 - Paper Source - Flatbed or Automatic document feeder
 - Output Type - Black and white, Grey scale, Full color
 - DPI - Dots per Inch
 - Quality Percentage
 - Duplex: Scan both sides of the paper
- Footer:** Date: 07/10/2017, Office dropdown, Select a folder dropdown, Description: Enter Description dropdown, Add / Update link, Setting link, [Select a scan setting] dropdown, Overrides: Auto Doc Feeder and Duplex checkboxes, Import File, Scan Single, and Scan Multiple buttons.

Callouts:

- Top Right:** 'Check this to keep this screen in front' (points to 'Keep on Top').
- Bottom Left:** 'Select scanner if connected to more than one. Selection displayed here.' (points to 'Change Scanner').
- Bottom Center:** 'Add new settings here' (points to 'Setting').
- Bottom Right:** 'Select your scan settings (specific for each scanner)' (points to '[Select a scan setting]').

Scanning improvements

Scan Settings

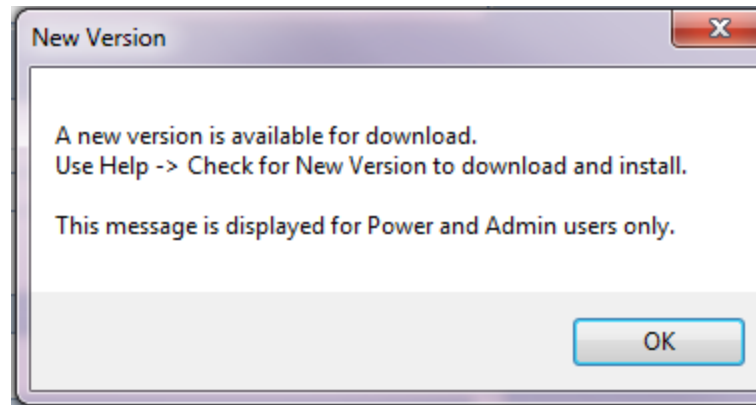


Create scan settings for each scanner

Scan a document to estimate how the selected settings will impact file size

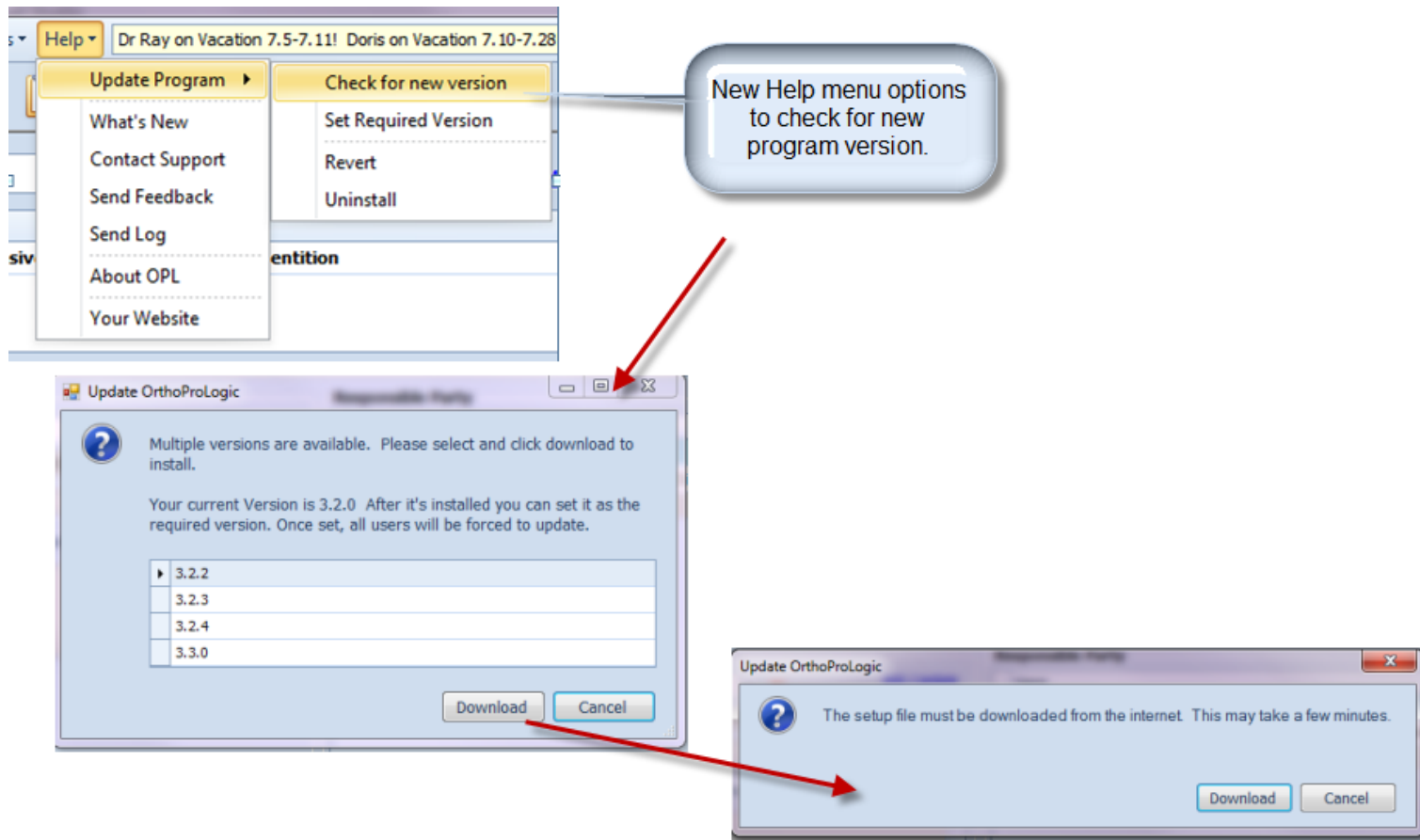
Scan Setting improvements

Automatic Program Updates



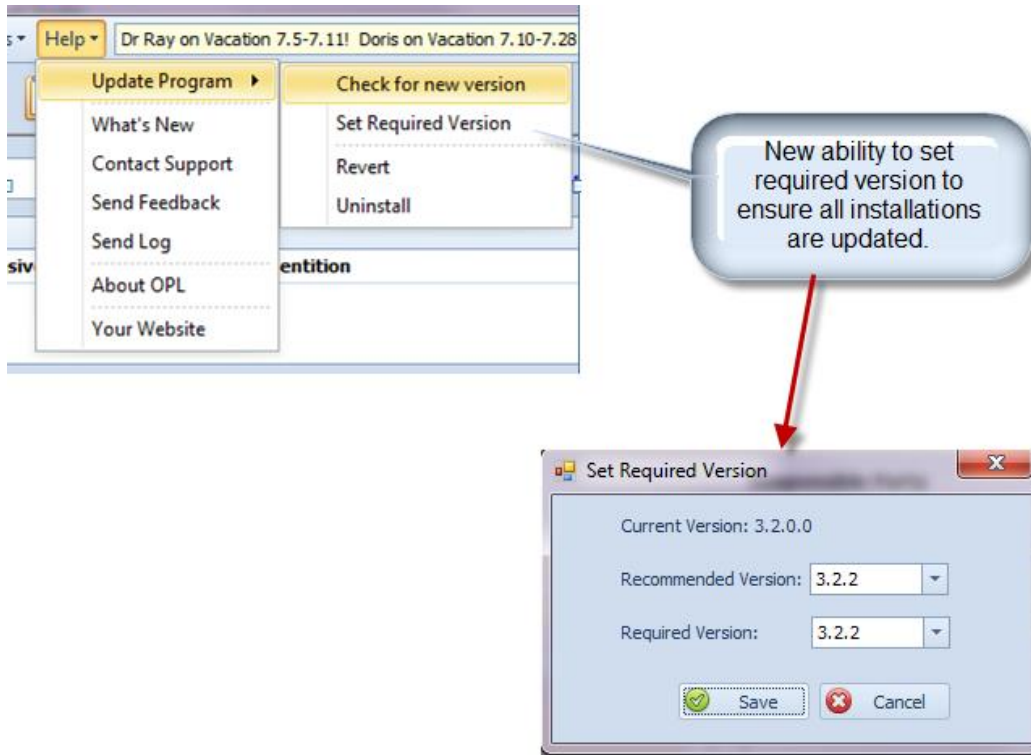
Power and Admin users will be notified if new version of OPL is available on the website.

Automatic Program Updates



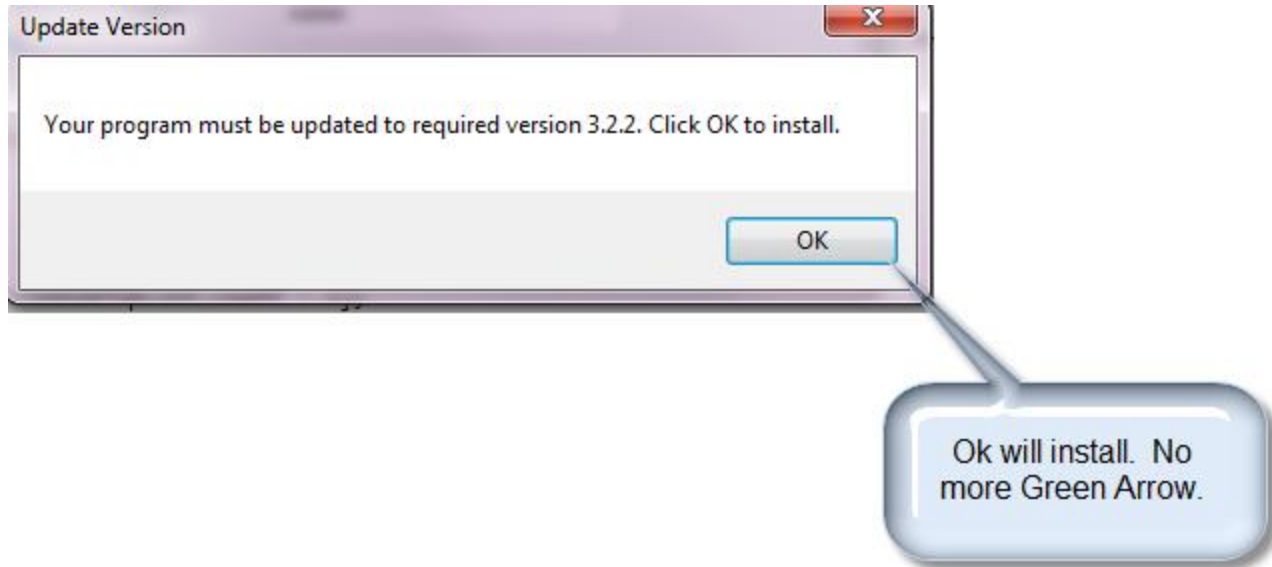
New menu option for Power and Admin users to check for new versions and automatically download and install.

Automatic Program Updates



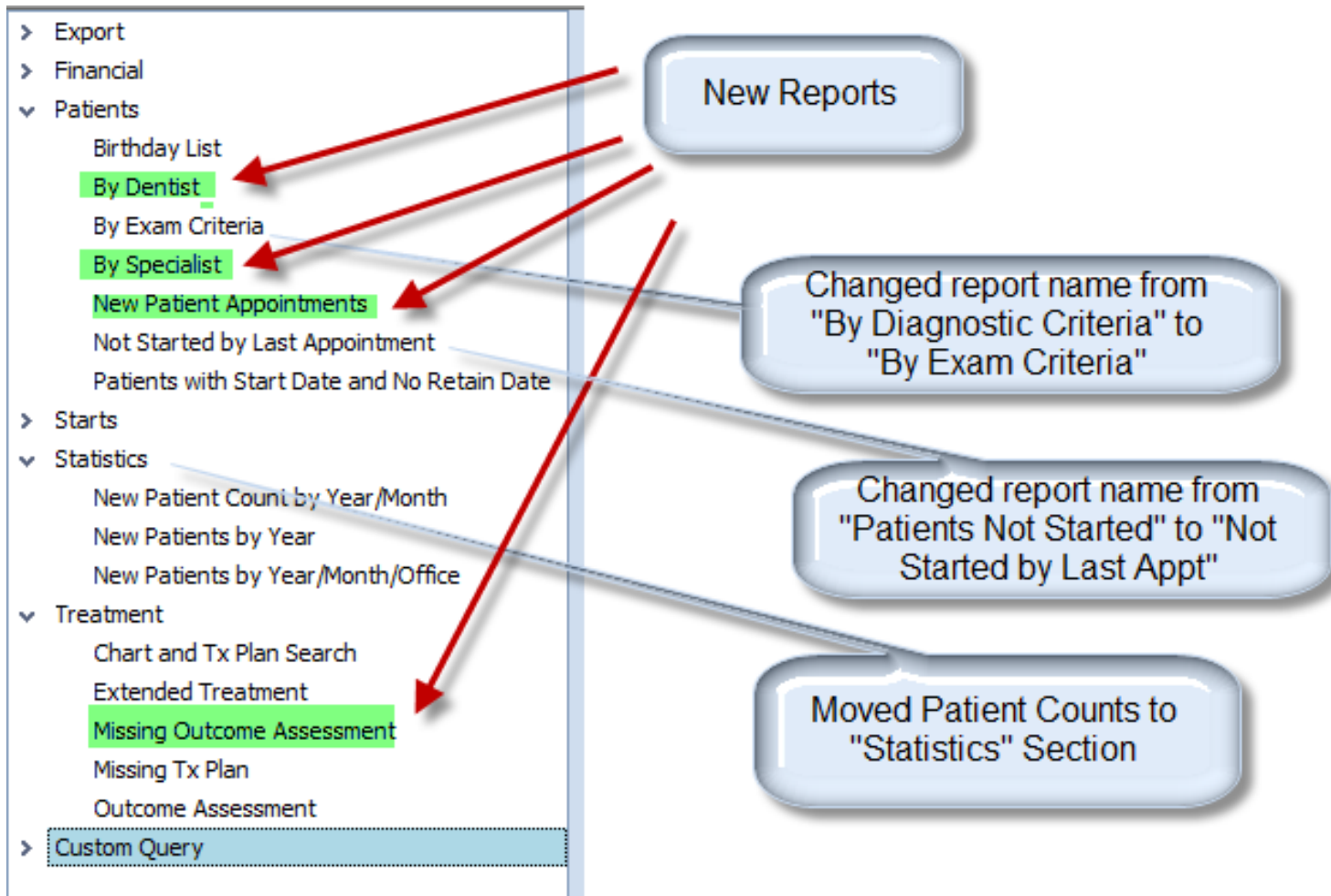
New menu option for Power and Admin users to set required version to keep whole office in sync.

Automatic Program Updates



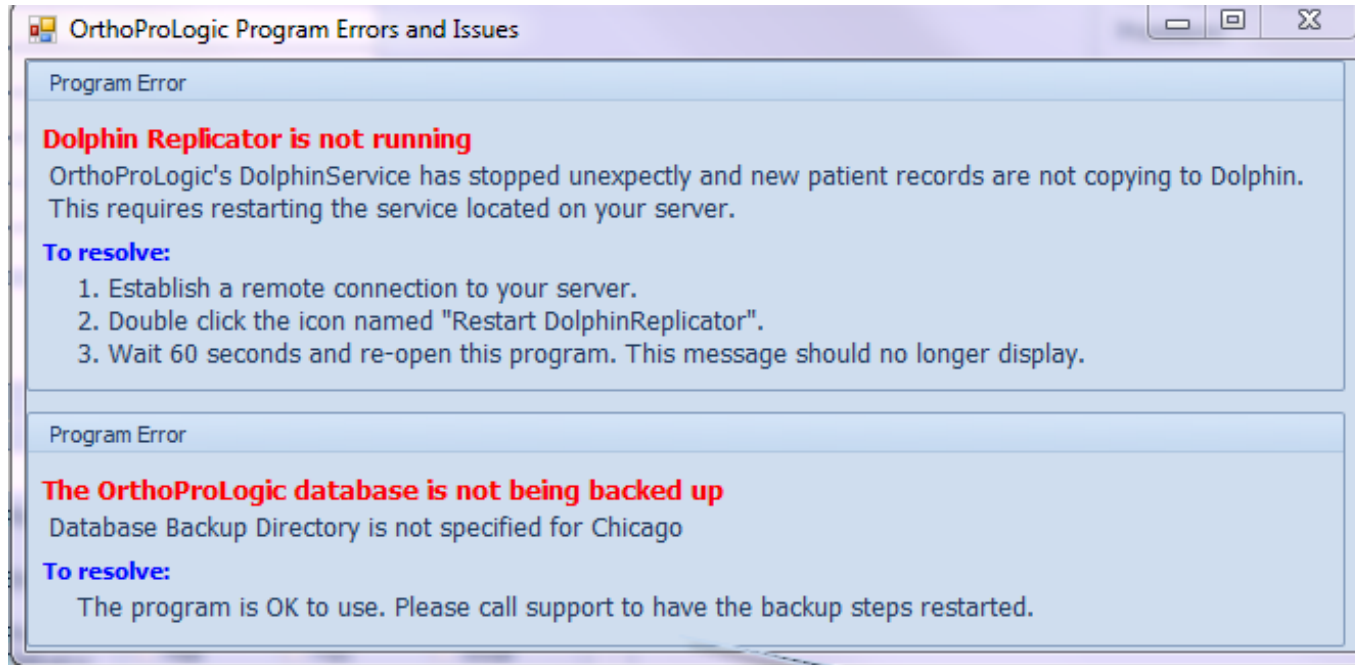
All users will be prompted to install the required version when logging on.

Reporting Improvements



Remove reliance on Microsoft Excel. Now using built-in spreadsheet functionality.

Improved Start Up Messages



Includes information on resolution.

Easier to read, more details